

PROACT.®

REFERENCE : PA306

SIZES : XS_S_M_L_XL_XXL_3XL_4XL

COMPOSITION :

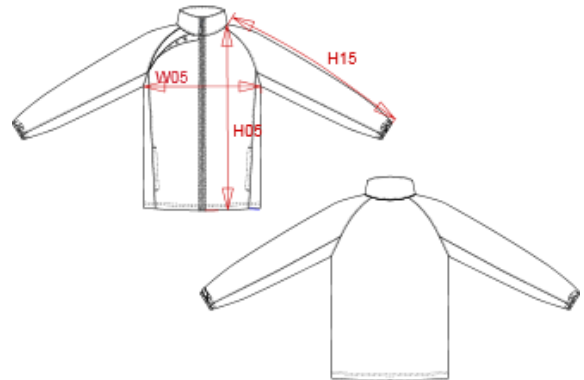
Main fabric : Polyester polytricot - 210 100%polyester
 Main fabric : Polyester polytricot - 210 For right front contrasted yokes. 100%polyester
 Mesh : Polyester birdeyes - 140 For contrasted front and sleeve yokes. 100%polyester

WEIGHT :

Main fabric : 210 gsm
 Main fabric : 210 gsm
 Mesh : 140 gsm

ARTICLE WEIGHT :

460 gr/pc



| DESCRIPTION | | | | | | | | | | COLORS | | PANTONE SERIGRAPHIE | | |
|--|-------|---|-------|-------|-------|-----|-------|-------|--|----------------------------------|--|----------------------|--|--|
| Français : Veste de survêtement English : Track top Nederlands : Deutsch : TRAININGSJACKE Español : CHAQUETA DE CHÁNDAL Italiano : GIACCA TUTA Português : CASACO DE DESPORTO | | | | | | | | | | Black / White / Storm grey | | Black / White / 425C | | |
| | | | | | | | | | | Sporty red / Black / Storm grey | | 1805C / Black / 425C | | |
| | | | | | | | | | | Sporty navy / White / Storm grey | | 7546C / White / 425C | | |
| | | | | | | | | | | Sporty r.b / Black / Storm grey | | 647C / Black / 425C | | |
| MEASUREMENT | | | | | | | | | | | | | | |
| Description | XS | S | M | L | XL | XXL | 3XL | 4XL | | | | | | |
| H05 Hauteur totale / Total height | 69 | 71 | 73 | 75 | 77 | 79 | 81 | 83 | | | | | | |
| H15 Longueur manche / Sleeve length | 79,25 | 81 | 82,75 | 84,50 | 86,25 | 88 | 89,75 | 91,50 | | | | | | |
| W05 1/2 largeur poitrine / 1/2 chest width | 52 | 55 | 58 | 61 | 64 | 67 | 70 | 73 | | | | | | |
| CARE LABEL | | | | | | | | | | | | | | |
| 40 | | | | | | | | | | | | | | |
| PACKING | | | | | | | | | | | | | | |
| Box | | 25 pcs / box All sizes => L:60cm W:40cm H:cm GW:kg NW:kg | | | | | | | | | | | | |