

# PROACT.®

**REFERENCE :** PA235

**SIZES :** XS\_S\_M\_L\_XL\_XXL\_3XL

**COMPOSITION :**

Main fabric : Brushed Polyester / Elastane jersey 90/10 - 270  
For back, inner and outer collar and under front tab 90% polyester / 10%elastane

Main fabric : Nylon ripstop 430T PA coating - 35 For front, pocket facing, collar yoke and back facing 100%polyamide

Main fabric : Polyester ripstop 430T PA coating - 35 For front, pocket facing, collar yoke and back facing 100%polyester

Wad 1 : Polyfil 160 For inner fronts padded 100%polyester

Lining : Polyester 210T - 60 For inner front and pocket sacks 100%polyester

**WEIGHT :**

Main fabric : 270 gsm

Main fabric : 35 gsm

Main fabric : 35 gsm

Wad 1 : 160 gsm

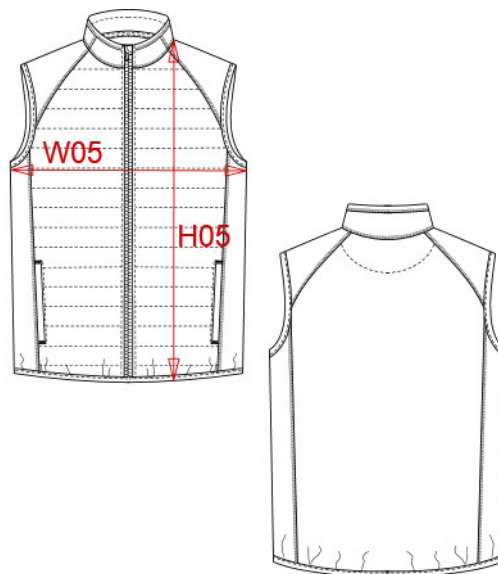
Lining : 60 gsm

**TECHNICAL DETAIL :**

Wate-repellent fabric 1 + 2

**ARTICLE WEIGHT :**

312 gr/pc



DESCRIPTION	
<b>Français :</b>	Veste sport bi-matière sans manches
<b>English :</b>	Dual-fabric sleeveless sports jacket
<b>Nederlands :</b>	Sportjas in twee stoffen zonder mouwen
<b>Deutsch :</b>	Sportweste aus Bi-Material
<b>Español :</b>	Chaleco deportivo dos-materiales
<b>Italiano :</b>	Giacca sportiva bimeriale smanicata
<b>Português :</b>	Colete de desporto bi-matéria

COLORS	PANTONE SERIGRAPHIE
Black	Black
Dark royal blue / Black	654C / Black
Sporty grey / Black	425C / Black
Sporty navy	7546C
Sporty red	1805C
Marl grey / Sporty navy	877C / 7546C
Lime / Black	367C / Black

MEASUREMENT							
Description	XS	S	M	L	XL	XXL	3XL
<b>H05 (M)</b> Hauteur totale / Total height	66	68	70	72	74	76	78
<b>W05 (M)</b> 1/2 largeur poitrine / 1/2 chest width	46	49	52	55	58	61	64

CARE LABEL				

PACKING	
Box	15 pcs / box XS => L:60cm W:40cm H:22cm GW:6kg NW:4.5kg S => L:60cm W:40cm H:22cm GW:6kg NW:4.5kg M => L:60cm W:40cm H:22cm GW:6kg NW:4.5kg L => L:60cm W:40cm H:22cm GW:6.5kg NW:5kg XL => L:60cm W:40cm H:22cm GW:6.5kg NW:5kg XXL => L:60cm W:40cm H:22cm GW:6.5kg NW:5kg 3XL => L:60cm W:40cm H:22cm GW:7kg NW:5.5kg