

# KARIBAN

**REFERENCE :** K590

**SIZES :** S\_M\_L\_XL\_XXL\_3XL\_4XL

**COMPOSITION :**

Main fabric : Cotton poplin - 120 100%cotton

**WEIGHT :**

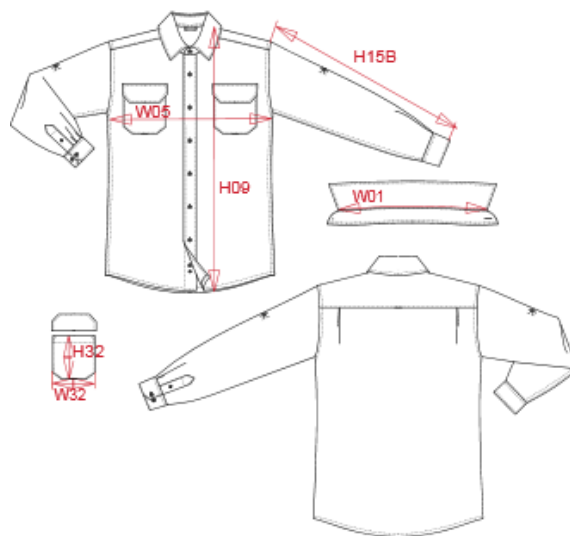
Main fabric : 120 gsm

**TECHNICAL DETAIL :**

Soft ironing

**ARTICLE WEIGHT :**

280 gr/pc



DESCRIPTION
<b>Français :</b> Chemise safari manches longues
<b>English :</b> Long sleeve safari shirt
<b>Nederlands :</b> Overhemd safari lange mouwen
<b>Deutsch :</b> Langarm-Safarihemd
<b>Español :</b> Camisa Safari hombre manga larga
<b>Italiano :</b> Camicia safari maniche lunghe
<b>Português :</b> Camisa Safari de manga comprida

COLORS	PANTONE SERIGRAPHIE
Beige	7536C
Navy	433C
White	White
Light khaki	7764C

MEASUREMENT							
Description	S	M	L	XL	XXL	3XL	4XL
<b>W05 (M)</b> 1/2 largeur poitrine à 1.5cm de l'emmanchure / 1/2 chest width at 1.5cm below armhole	51	54	57	60	63	66	69
<b>H09 (L)</b> Hauteur totale devant / Front total height	73,50	75,50	77,50	79,50	81,50	83,50	85,50
<b>H15B (L)</b> Longueur manche avec poignet / Sleeve length with cuff	64	65	66	67	68	69	70
<b>W01 (M)</b> Longueur encolure / Neckline length	40,50	41,75	43	44,25	45,50	46,75	48
<b>H32 (L)</b> Hauteur poche devant / Front pocket height	12,50	12,50	13,50	13,50	14,50	14,50	14,50
<b>W32 (L)</b> Largeur poche devant / Front pocket width	11,50	11,50	12,50	12,50	13,50	13,50	13,50

CARE LABEL

PACKING	
Box	25 pcs / box S => L:60cm W:40cm H:17cm GW:7.00kg NW:5.75kg M => L:60cm W:40cm H:17cm GW:7.50kg NW:6.25kg L => L:60cm W:40cm H:17cm GW:8.05kg NW:6.80kg XL => L:60cm W:40cm H:17cm GW:8.25kg NW:7.00kg XXL => L:60cm W:40cm H:17cm GW:8.45kg NW:7.20kg 3XL => L:60cm W:40cm H:17cm GW:8.75kg NW:7.50kg 4XL => L:60cm W:40cm H:17cm GW:9.05kg NW:7.80kg