

**GILDAN**



# 18500B

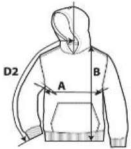
## Heavy Blend Youth Hooded Sweatshirt

**DETAILS**

**Fabric**  
**Yarn Count**  
**Features**

50% Cotton, 50% Polyester, 271.0 G/SqM (White 257 G/SqM)  
20/1  
Spun yarn for softer feel and reduced pilling  
Double-lined hood  
Twin-needle stitching at shoulders, armholes, neck, waistband and cuffs  
Twin-needle pouch pocket for added reinforcement  
1 x 1 rib with elastane for enhanced stretch and recovery  
Classic fit, tubular body  
Grey pearlized tear away label  
**Transitioning to New Grey Razor Tear Away Label in 2022**  
CPSIA Tracking Label Compliant  
Honduras, Nicaragua, El Salvador  
XS - XL 24 PIECES  
15  
75

**Country of Origin**  
**Case Packs**  
**Colours**  
**SKU's**



**SPECIFICATIONS**

	Tol-	Tol+	XS	S	M	L	XL
<b>Centimeters</b>							
<b>Chest (A)</b>	1.270	1.270	40.640	43.180	45.720	48.260	50.800
<b>Length from HPS (B)</b>	2.540	2.540	50.165	53.975	57.150	60.960	64.770
<b>Sleeve length (Center back to incl.cuffs) (D2)</b>	2.540	2.540	59.690	67.310	70.485	76.835	83.820
<b>Inches</b>							
<b>Chest (A)</b>	0.500	0.500	16.000	17.000	18.000	19.000	20.000
<b>Length from HPS (B)</b>	1.000	1.000	19.750	21.250	22.500	24.000	25.500
<b>Sleeve length (Center back to incl.cuffs) (D2)</b>	1.000	1.000	23.500	26.500	27.750	30.250	33.000

**COLOURS**

- Black
- Dark Heather
- Forest Green
- Gold
- Graphite Heather
- Heliconia
- Irish Green
- Light Pink
- Maroon
- Navy
- Purple
- Red
- Royal
- Sport Grey
- White

Code	Colour Chip	Sizes
036	[Black chip]	XS-XL
108	[Dark Heather chip]	XS-XL
033	[Forest Green chip]	XS-XL
024	[Gold chip]	XS-XL
516	[Graphite Heather chip]	XS-XL
010	[Heliconia chip]	XS-XL
167	[Irish Green chip]	XS-XL
020	[Light Pink chip]	XS-XL
083	[Maroon chip]	XS-XL
032	[Navy chip]	XS-XL
081	[Purple chip]	XS-XL
040	[Red chip]	XS-XL
051	[Royal chip]	XS-XL
095	[Sport Grey chip]	XS-XL
030	[White chip]	XS-XL

**CHANGES**

Deletions  
XS, S, M, L, XL  
Total Net Change 25 SKU's

Azalea, Heather Sport Dark Navy, Mint Green, Orchid, Violet